

FLUID LINE TECHNOLOGY

MANUFACTURER OF SANITARY
AND ULTRACLEAN COMPONENTS

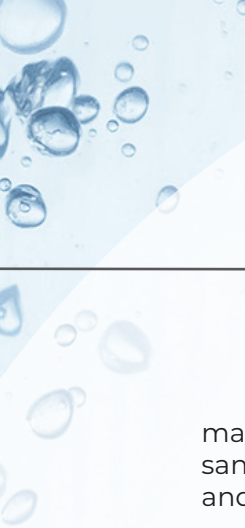
PRODUCT CATALOG



CUSTOM

STANDARD

PROTOTYPE



MANUFACTURER OF SANITARY AND ULTRACLEAN COMPONENTS

Since 1989, Fluid Line Technology has been the answer to the need for manufacturing quality crafted stainless steel custom fabrications and standard sanitary components for the Bio-Technology, Bio-Pharmaceutical, Food, Dairy, Beverage and Semi-Conductor marketplace.

Fluid Line Technology has produced a wide variety of custom fabrications to complement our line of standard products. Over the years, our standard product lines have developed in conjunction with our Customer's needs and concerns. We have taken great pride in developing these products and look forward to the opportunities to learn from and serve new and existing Customers.

We have always maintained the attitude of, "if you can dream it up, we can build it!" As you look through our catalog you will see many examples of custom fabricated items that look as if they are right off the shelf or from a catalog. This is the direct result of a staff of employees who are passionate about stainless steel custom fabrications! We feel so strongly about this, we go the extra mile to procure our own materials, mainly 316L, low ferrite and low sulfur content to ensure the highest quality.

Along with our state-of-the-art TIG, Orbital, and Hand welding department, we house a fully tooled and creative machining and cutting department to meet most any custom fabrication needs. Our ID and OD polishing professionals can polish any of your fabrications to meet or exceed any surface finish you may require.

Our onsite washing and electro-polishing department is staffed with highly trained professionals. We also have an onsite inspection department and we maintain being BPE and ISO compliant.

Fluid Line is located in Southern California. Our facility is very near to our local suppliers and vendors in order to keep our costs to a minimum. We pride ourselves on being an efficient manufacturing facility with a professionally designed floor plan for optimal work flow.

Other services we provide are, manufacturing for OEM'S, engineering services, skid & filtration assembly, product development, onsite tube bending, onsite abrasive flow polishing, onsite citric passivation, and local nitric passivation to your required specifications.

MANUFACTURING CAPABILITIES

□ METAL FORMING

Tube Bending up to 2" diameter

Tee Porting Branches and Multi- Outlet manifolds up to 6" diameter

□ MATERIALS

316 L

Alloy 22 & 276

Performance Plastics

Consult Factory for other exotic materials

□ CHEMICAL TREATMENT

Electro Polishing

Passivation Citric / Nitric

□ WELDING

From 1/8" diameter through 12" diameter

Manual weld

Semi Automatic weld

Orbital weld

Weld documentation logs upon request

□ POLISHING

From 1/4" diameter through 12" diameter

Mechanical Polishing from mill finish to 5Ra

Abrasive Flow Polishing service available

□ MACHINING

Manual Lathe & Mill

CNC Lathe & Mill

□ ADDITIONAL SERVICES

Helium Leak Test

Third Party Inspection

Hydrostatic Test

Bore Scope Inspection

SPECIALTY ITEMS

- ❑ Abrasive Flow Machine, 90 degree elbows available 1/2"-3/4"-1"
- ❑ Dip tubes
- ❑ Transfer panels
- ❑ Jumpers
- ❑ Restricting Orifices
- ❑ Helospray assemblies
- ❑ Sample Vials
- ❑ Stability Test Vials
- ❑ Filter Housings
- ❑ Multi-port block body design
- ❑ Custom valve fabrication
- ❑ Tubular sub-assemblies
- ❑ Integration of controls and instrumentation into process piping
- ❑ Filling needles
- ❑ Rebuild / Refurbish filter housings
- ❑ Rebuild / Refurbish diaphragm valves

ACQUASEAL® ULTRA-CLEAN AIR-ACTUATED DIAPHRAGM VALVE

- ☐ All stainless steel construction
- ☐ All machined surfaces
- ☐ Non-rotating indicating stem
- ☐ ASME BPE 2014 version compliant
- ☐ Patent bonnet feet design
- ☐ Kaltraz diaphragm option
- ☐ Featured actuator retainer design reduce footprint
- ☐ Actuator internal travel stop



ACQUASEAL® ULTRA-CLEAN MANUAL DIAPHRAGM VALVE



- ☐ All stainless steel construction
- ☐ All machined surfaces
- ☐ ASME BPE 2014 version compliant
- ☐ Patent bonnet feet design
- ☐ Kaltraz diaphragm option

SIP-ABLE SAMPLE VALVE



BENEFITS

- ☐ Minimal Dead Leg
- ☐ Fully Autoclavable / Sanitary design
- ☐ Non-rotating indicating stem
- ☐ ASME BPE compliant materials and design for cleanability and sterility
- ☐ Quick and easy assembly / disassembly per your maintenance schedule
- ☐ Steam port for SIP cleaning cycle (Standard 1/4" clamp)

*CONTACT FACTORY FOR
PART NUMBER CONFIGURATION*

TECHNICAL INFORMATION

- ☐ Pressure rating up to 150 psi
- ☐ Variety of surface finishes available
- ☐ Variety of Alloy materials available
- ☐ Variety of chemical treatments available
- ☐ NPT and clamp instrument connections
- ☐ All insertion lengths available
- ☐ MTR'S standard for full material traceability (Heat numbers / codes)
- ☐ All insertion lengths available
- ☐ MTR'S standard for full material traceability (Heat numbers / codes)

SANITARY INLINE BLEED AND SAMPLE VALVES

BENEFITS

- ▣ Minimal Dead Leg
- ▣ Fully Autoclavable / Sanitary design
- ▣ Non-rotating system
- ▣ Quick and easy assembly / disassembly per your maintenance schedule
- ▣ Fully customizable to customer specifications



TECHNICAL INFORMATION

- ▣ Controlled sulphur stainless steel
- ▣ Available in Alloy 22
- ▣ Variety of surface finishes available
- ▣ Selection of "O" rings available: EPDM - Viton - Silicone (Clear / Red)
- ▣ PTFE-TFM Seat
- ▣ Variety of chemical treatments available
- ▣ Variety of Valve sizes:
 - 1/8" valve - 0.104" Inlet Bore size
 - 1/4" valve = 0.187" Inlet Bore size
 - 1/2" valve = 0.370" Inlet Bore size
- ▣ MTR's standard for full material traceability (Heat numbers / codes)

SANITARY ANGLE BLEED AND SAMPLE VALVES (SAFETY CAP)

BENEFITS

- ❑ Minimal Dead Leg
- ❑ Fully Autoclavable / Sanitary design
- ❑ Indicating stem for Open / Close
- ❑ Designed for easy cleaning and sterilization
- ❑ Fully customizable to customer specifications

TECHNICAL INFORMATION

- ❑ Controlled sulphur stainless steel
- ❑ Available in Alloy 22 & 276 and AL6XN
- ❑ Variety of surface finishes available
- ❑ Selection of "O" rings available:
EPDM - Viton - Silicone (Clear / Red / Kaltraz)
- ❑ PTFE-TFM Seat / Elastomer Seat
- ❑ Variety of chemical treatments available
- ❑ Variety of Valve sizes:
1/8" valve - 0.104" Inlet Bore size
1/4" valve = 0.187" Inlet Bore size
1/2" valve = 0.370" Inlet Bore size
- ❑ MTR's standard for full material traceability (Heat numbers / codes)

MULTIPLE HANDLE COVERS

BENEFITS

- ❑ Minimal Dead Leg / Solid /
Submersible / Toggle /
Toggle Safety / Submersible Toggle /
Submersible Toggle Safety



TEE BLOCK BLEED AND SAMPLE VALVES

BENEFITS

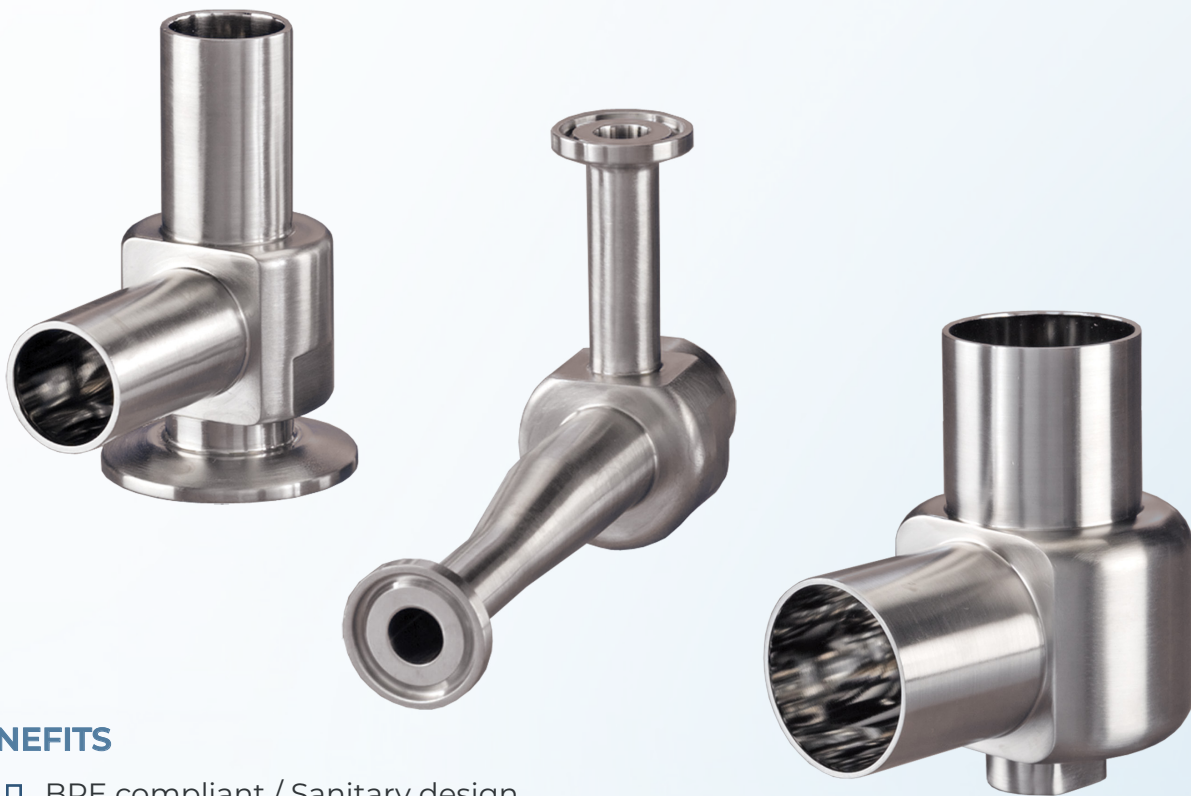
- ❑ Minimal Dead Leg
- ❑ Sanitary design
- ❑ Available with locking or non-locking safety handle
- ❑ Fully customizable to customer specifications

TECHNICAL INFORMATION

- ❑ Pressure rating up to 150 psi
- ❑ Variety of surface finishes available
- ❑ Variety of Alloy materials available
- ❑ Variety of chemical treatments available
- ❑ NPT and clamp instrument connections
- ❑ All insertion lengths available
- ❑ MTR'S standard for full material traceability (Heat numbers / codes)



SANITARY ANGLE THERMOWELLS



BENEFITS

- ❑ BPE compliant / Sanitary design
- ❑ Fully customizable for specific needs
- ❑ Autoweld and clamp connections are standard

TECHNICAL INFORMATION

- ❑ Pressure rating up to 150 psi
- ❑ Variety of surface finishes available
- ❑ Variety of Alloy materials available
- ❑ Variety of chemical treatments available
- ❑ NPT and clamp instrument connections
- ❑ All insertion lengths available
- ❑ MTR'S standard for full material traceability (Heat numbers / codes)

SANITARY SAMPLE COOLERS (STEAM CONDENSERS)

BENEFITS

- ☐ BPE compliant
- ☐ Sanitary / Industrial / Disposable
- ☐ Inlets & Outlets fully customizable
- ☐ Horizontal & vertical designs are standard
- ☐ Configuration tailored to customer needs
- ☐ Stands are optional

TECHNICAL INFORMATION

- ☐ Pressure rating up to 150 psi
- ☐ Variety of surface finishes available
- ☐ Variety of chemical treatments available
- ☐ Weltd surfaces and jackets are available in 316L or Alloy 22
- ☐ MTR'S standard for full material traceability (Heat numbers / codes)



POINT OF USE SANITARY HEAT EXCHANGER

BENEFITS

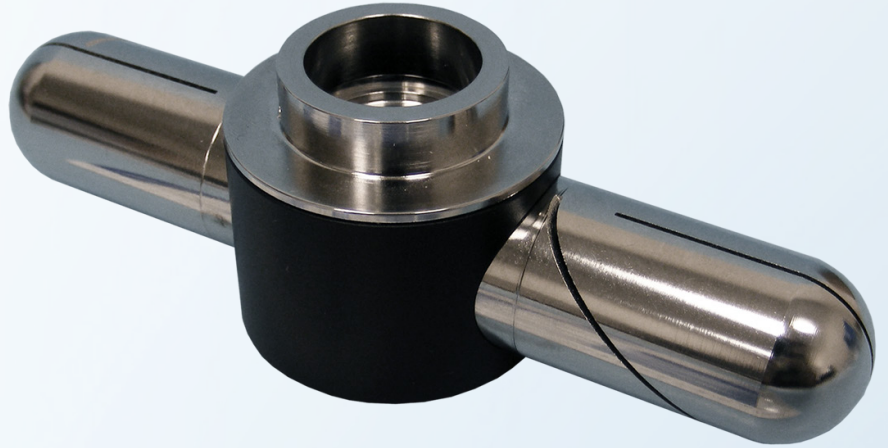
- ❑ BPE compliant / Sanitary design
- ❑ Cleanable / Drainable
- ❑ Horizontal & vertical application available
- ❑ Configuration tailored to customer needs
- ❑ Special shell design prevents coolant / product contamination
- ❑ Easy visual inspection

TECHNICAL INFORMATION

- ❑ Pressure rating up to 150 psi
- ❑ Variety of surface finishes available
- ❑ Variety of chemical treatments available
- ❑ Weltd surfaces and jackets are available in 316L or Alloy 22
- ❑ Special point of use Heat Exchanger engineered on application
- ❑ MTR'S standard for full material traceability (Heat numbers / codes)



HELOSPRAY DEVICE



BENEFITS

- ❑ Sanitary design
- ❑ Full coverage of your entire vessel
- ❑ Hygienic and non hygienic applications
- ❑ Replaces traditional non rotating spray ball
- ❑ Powered by the line pressure of cleaning media
- ❑ For optimal cleaning the first time and every time

*See our website
for a live product demonstration*

TECHNICAL INFORMATION

- ❑ Available in 316L SS
- ❑ Installs on a dip tube
- ❑ Built on application and custom design assemblies
- ❑ Tube Dia. 1/4"-3/8"-1/2"-3/4"-1" and longer as special order
- ❑ MTR'S standard for full material traceability (Heat numbers / codes)

FILTER HOUSINGS



BENEFITS

- ❑ BPE compliant / Sanitary design
- ❑ Optional vent bleed valve available
- ❑ Easy draining and sampling for integrity testing
- ❑ Available in single and multi-round housings with various inlet and outlet connections
- ❑ Designed to prevent build-up and entrapment of contaminants
- ❑ Bayonet style filter base for fast and easy filter replacement

TECHNICAL INFORMATION

- ❑ Built for industry standard use with 222 Code 8 or 226 Code 7 style cartridge
- ❑ Available in 316L stainless steel electropolished for corrosion resistance
- ❑ MTR'S standard for full material traceability (Heat numbers / codes)

DIP TUBES



BENEFITS

- ❑ BPE compliant / Sanitary design
- ❑ Custom design for each application
- ❑ No foam capabilities
- ❑ 45 degree tube available
- ❑ Straight through design
- ❑ Dip tube for spray device
- ❑ Multiple tubes from a single cap

TECHNICAL INFORMATION

- ❑ Available in 316L / Alloy 22
- ❑ Various finishes available
- ❑ MTR'S standard for full material traceability (Heat numbers / codes)



INSTRUMENT TEE'S AND CPM'S

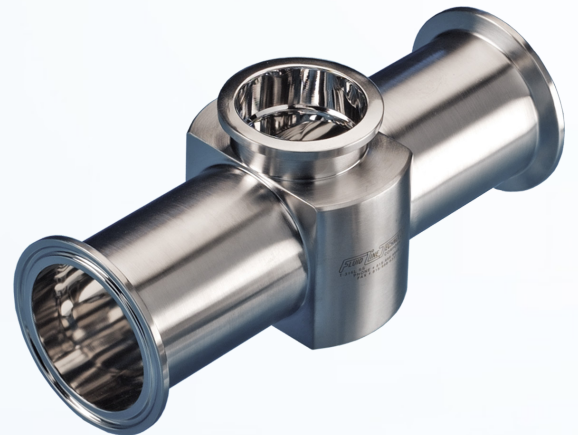


BENEFITS

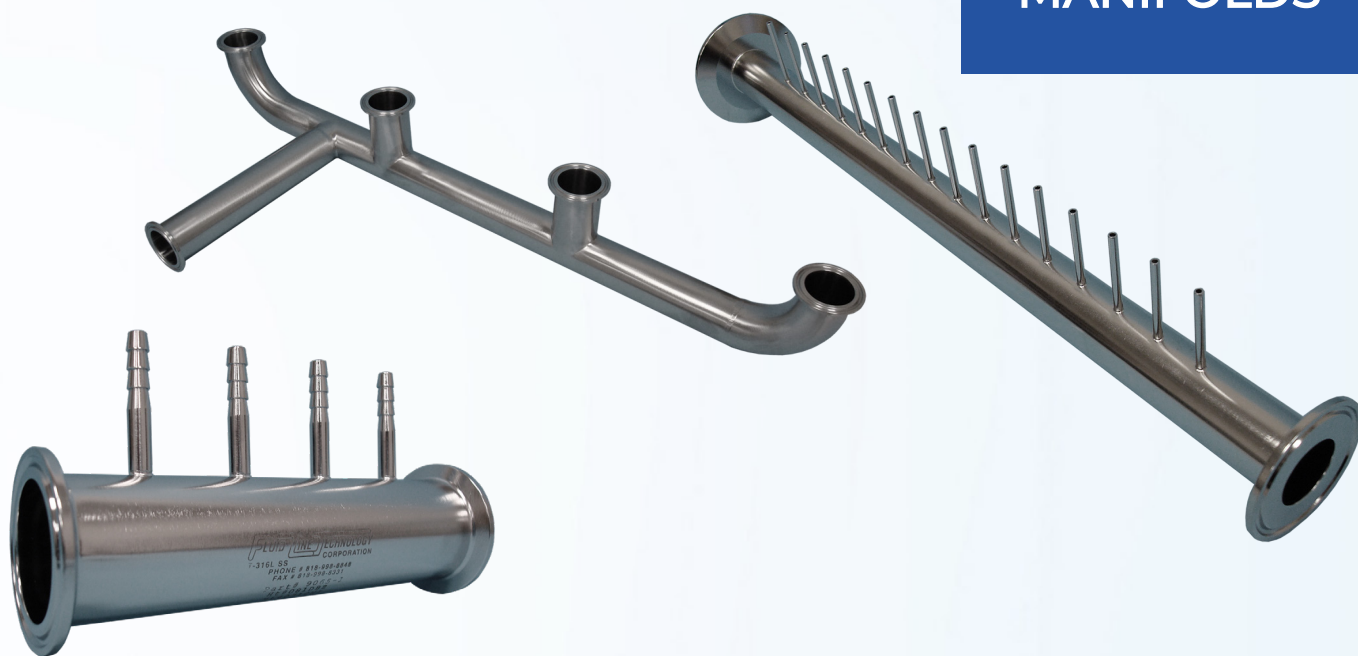
- ❑ BPE compliant / Sanitary design
- ❑ Fully customizable for specific needs
- ❑ Autoweld and clamp connections are standard

TECHNICAL INFORMATION

- ❑ Pressure rating up to 150 psi.
- ❑ Variety of surface finishes available
- ❑ Variety of Alloy materials available
- ❑ Variety of chemical treatments available
- ❑ MTR'S standard for full material traceability (Heat numbers / codes)



MANIFOLDS



VIALS

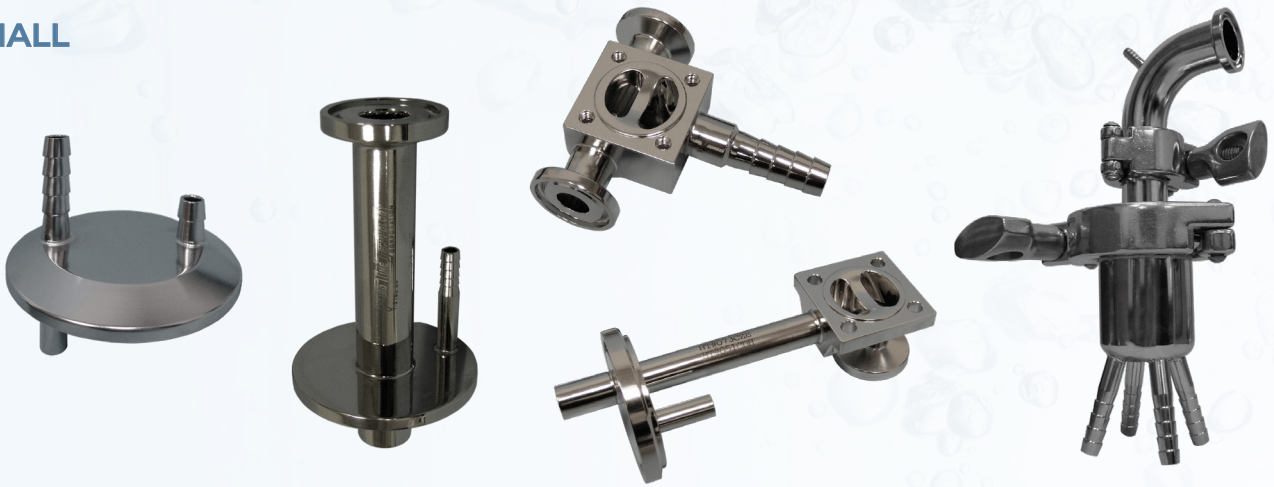


COAXIAL

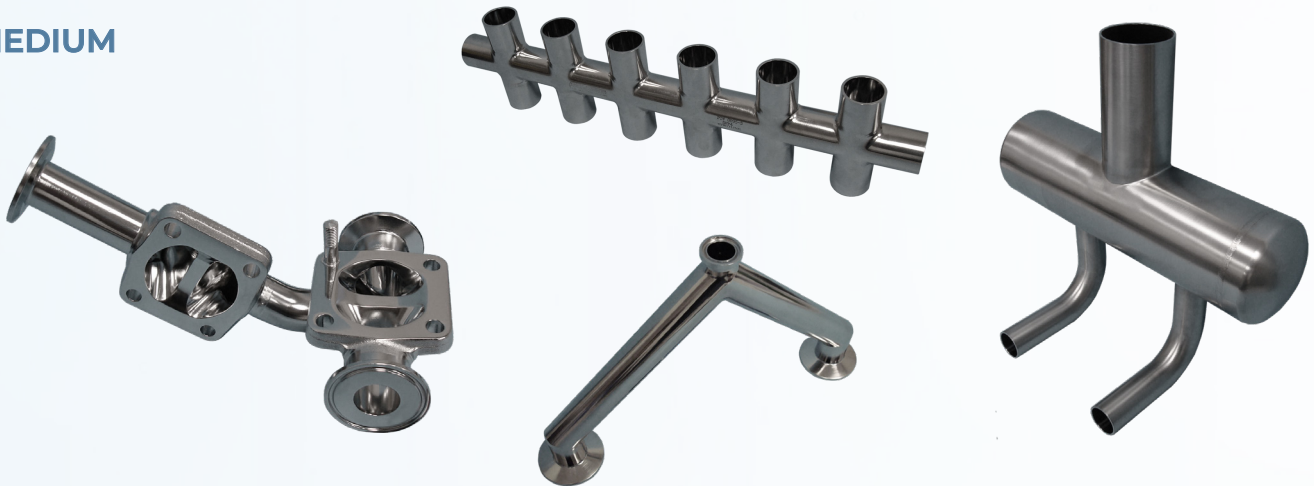


CUSTOM FABRICATIONS

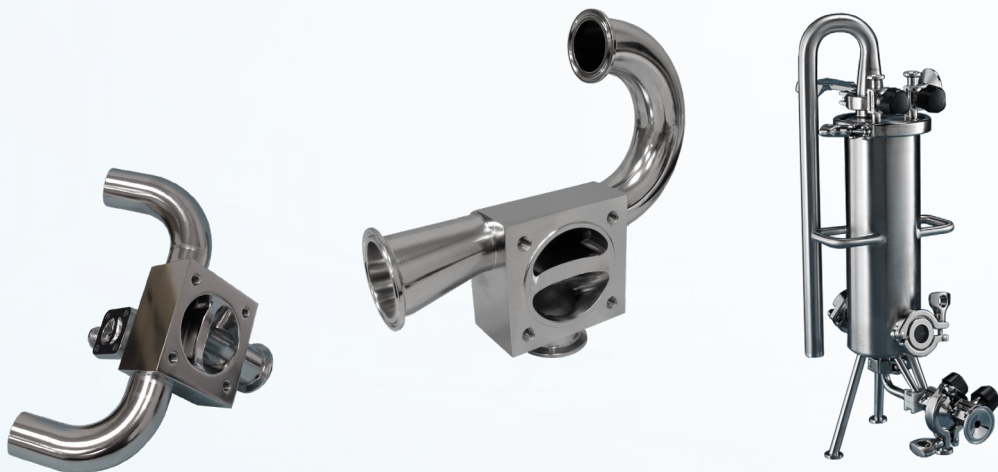
SMALL



MEDIUM



LARGE



CERTIFICATES



Certificate of Surface Treatment

Company Name		Certificate No.	
Contact		Customer P.O. No.	
Address		Job No.	
City, State, Zip		Time	

Item	Quantity	Part Number	Description

Treatment	ID Finish	Specifications
Electro Polish	Passivate	OD Finish

Certification	We hereby certify that the parts described above were given the treatment indicated, in accordance with the stated specifications.
---------------	--

Authorized Representative	Date

9362 Eton Ave • Chatsworth, CA 91311 • 818-998-8848 Phone • 818-998-6331 F
www.fluidlinetech.com



Welding Conformance

Company Name		Certificate No.	
Contact		Customer P.O. No.	
Address		Job No.	
City, State, Zip		Time	

Item	Quantity	Part Number	Description

Certification	Fluid Line Technology certifies that no filler have been used on parts and it 100% automatic fuse weld procedure.
---------------	---

Authorized Representative	Date

9362 Eton Ave • Chatsworth, CA 91311 • 818-998-8848 Phone • 818-998-6331 F
www.fluidlinetech.com



Certificate of Pressure Test

Company Name		Certificate No.	
Contact		Customer P.O. No.	
Address		Job No.	
City, State, Zip		Time	

Item	Quantity	Part Number	Description

Procedure:
 1- Cap all outlets.
 2- Connect pressure test gauge.
 3- Connect 75 psi Air Inlet.
 4- Pressure tank to 90 psi.
 5- Test unit under 90 psi. for a minimum of 3 minutes.

PASS: _____ NO PASS: _____
 DATE TESTED: _____

Certification	We hereby certify that the parts described above were given the treatment indicated, in accordance with the stated specifications.
---------------	--

Authorized Representative	Date

9362 Eton Ave • Chatsworth, CA 91311 • 818-998-8848 Phone • 818-998-6331 Fax
www.fluidlinetech.com



Quality Control Documentation / Compliance Rec

Project: _____
 Drawing No.: _____
 Line No.: _____

Weld No.	Material Type	Size (in.)	Cast/Heat No.	Date Weld	Weld Procedure	Ra Loc.	Ra Read
01							
02							

Customer	P.O. No.
Attn:	Part No.
	Weld Log No.
	Job No.
	Welder
	Welder Id No.
	Quantity

All welds performed in accordance with PQR's established by: _____ Inspected by: _____

Qualified by: _____ Date: _____

9362 Eton Ave • Chatsworth, CA 91311 • 818-998-8848 Phone • 818-998-6331 F
www.fluidlinetech.com



Certificate of Electropolish

Company Name		Customer P.O. #	
Attn.		Date	
Part #		Quantity	
Job #		Time	

Certification	This is to certify that the parts were polished and Electro-polish to 20 Ra in accordance to Fluid Line Technology Corporation.
---------------	---

Description: _____

Process: VIA EP PROCESS

Authorized Representative	Date

9362 Eton Ave • Chatsworth, CA 91311 • 818-998-8848 Phone • 818-998-6331
www.fluidlinetech.com



PASSIVATION PROCEDURE

- Citrisurf 3050 Pharmaceutical Grade
- Passivation Procedure - Tank / Submersion Bath Application
- 1- Clean surface to be free of all oils and grease with Plankal Soap
 - 2- Submerge surface / part in Citrisurf 3050 bath.
 - Ambient temperature of room/surface = 70° and above - leave Part submerged Citrisurf 3050 for 40-minutes.
 - Surface temperature of 120° to 160° - leave part submerged in Citrisurf 3050 for 30- minutes.
 - 3- After Submerging work Piece and Process is completed Rinse all wetted surfaces utilizing DI water . All surface must be free of any water stain.

Passivation Certification

Fluid Line Job #:	Passivated By:
Customer:	
Customer P.O.#:	
Description:	Representative:
Drawing No.:	
Quantity:	Time:
Certificate #:	Date:

9362 Eton Ave • Chatsworth, CA 91311 • 818-998-8848 Phone • 818-998-6331 Fax
www.fluidlinetech.com

9362 ETON AVENUE, CHATSWORTH, CA 91311

TEL 818.998.8848 FAX 818.998.6331

EMAIL INFO@FLUIDLINETECH.COM

WWW.FLUIDLINETECH.COM



WWW.FLUIDLINETECH.COM